



# Showfish

AUGUST 2005

NEWSLETTER OF THE COAST FISH CLUB

VOLUME 14, ISSUE 8

## What's Inside —

- 2 **Dolphin Drafting** — How calves keep up with their mothers  
**Out of Tanganyika** — Cichlid flock speciation  
**Membership News** — New members, memberships due and past due
- 3 **Board of Directors**  
**When and Where We Meet**
- 4 **Sponsors** — A partial list of supporting manufacturers who contribute goods to our club  
*Membership News, cont.*  
**Food Gratitude Payment**
- 5 **Science Trivia** — Skewed gender ratios  
**Events Elsewhere** — Other local clubs, Findig, AGA contest  
**Plant Bit** — *Nymphaea mexicana*, yellow dwarf lily
- 6 **Summer Projecte** — Stained glass window  
**Word Puzzle** — Member Names

The Showfish is published monthly by California's Organization of Aquatic Show Tropicals.

Edited by Charlotte Marelus

Printing and distribution are by McCabe Printing of Norwalk CA.

Unless marked with a © symbol, articles, photos and/or artwork may be reprinted by other societies, providing full credit is given to the author and/or artist, COAST, and to the Showfish. A copy of the publication containing the reprinted material should be sent to the editor upon publication.

Opinions, conclusions, and attitudes expressed herein are those of the authors and do not necessarily represent those of COAST fish club. COAST is not responsible for information or actions taken based on information presented in the Showfish or at club meetings.

Items for publication in Showfish are due within one week after the monthly meeting and will be included as space and time permit within constraints of club bylaws. Articles received after the deadline will be used in the next newsletter as permitted.

Editorial Team: C. Marelus, Mike McCabe, and Pauline Jackson

## August 8th Meeting — Aquarama spectacular SPEAKER: Luke Roebuck giving PowerPoint presentation

Aquarama is one of the world's major ornamental fish trade shows, held annually in Singapore. Luke Roebuck has combined all the photos he took at Aquarama into a PowerPoint presentation.

Aquarama features new species being introduced to the trade, new varieties of fish prized and developed for their colors and patterns (such as guppies and discus), new equipment being offered for professionals and hobbyists, tidbits and knick-knacks - all crunched into one place occupied by thousands of people for a period of a few days.

Aquarama is the place where you can test your buying decision skills, as well as your observational skills: shall you get the red Arowana or a new car or put 5% down on a condo (granted, the Arowana costs a bit more and probably still can't be brought into the United States, but a car or a condo are so ... plebian).

Six — eight years ago, Luke had never presented anything using a computer, but those who saw his last presentation know he's taken to the skills like (dare we say it) a fish to water. His photography is good, his organization is good, and the content always excellent. You gotta come see this month's feature presentation.

**Nomination Month** — August is the month we select or take volunteers for people to handle the yucky administrative duties of the club. Nominate yourself, nominate someone too shy to put in their own name even though they want to. Nominate your spouse then magnimously volunteer to help them. Voting is in September.

The current slate of officers have been doing the various Board of Director jobs for so long they're used up. It's your turn to make things happen the way you want them to for a change.

I know everyone is scared witless about taking a board position, but for crying out loud, guys, it's just a little job, and it needs to be done.

Some of it is actually entertaining to do. Behind the scene posts are available for the "I don't want to be noticed" personalities as well as posts for those who reach their potential by leading.

For those who need to be insulted to act: Stop sitting on your a\*\* and make something of it instead, whether smart or dumb; mistakes and accomplishments are normal parts of life, even when committed as an officer of an all-volunteer non-profit club.

For those who respond to simple calls to action: Stand up and participate in having fun and building the club into an even-more-fun event generator. It actually feels good sometimes—give it a try.

## ***The hydrodynamics of dolphin drafting***

J Biol. 2004; 3(2): 8. Published online 2004 May 4. doi: 10.1186/jbiol2. Copyright © 2004 Weihs; licensee BioMed Central Ltd. This is an Open Access article: verbatim copying and redistribution of this article are permitted in all media for any purpose, provided this notice is preserved along with the article's original URL.

Daniel Weihs, Faculty of Aerospace Engineering, Technion, Israel Institute of Technology, Haifa 32000, Israel Corresponding author. Daniel Weihs: dweihs@tx.technion.ac.il

Drafting in cetaceans is defined as the transfer of forces between individuals without actual physical contact between them. This behavior has long been surmised to explain how young dolphin calves keep up with their rapidly moving mothers. It has recently been observed that a significant number of calves become permanently separated from their mothers during chases by tuna vessels. A study of the hydrodynamics of drafting, initiated in the hope of understanding the mechanisms causing the separation of mothers and calves during fishing-related activities, is reported here.

### RESULTS

Quantitative results are shown for the forces and moments around a pair of unequally sized dolphin-like slender bodies. These include two major effects. First, the so-called Bernoulli suction, which stems from the fact that the local pressure drops in areas of high speed, results in an attractive force between mother and calf. Second is the displacement effect, in which the motion of the mother causes the water in front to move forwards and radially outwards, and water behind the body to move forwards to replace the animal's mass. Thus, the calf can gain a 'free ride' in the forward-moving areas. Utilizing these effects, the neonate can gain up to 90% of the thrust needed to move alongside the mother at speeds of up to 2.4 m/sec. A comparison with observations of eastern spinner dolphins (*Stenella longirostris*) is presented, showing savings of up to 60% in the thrust that calves require if they are to keep up with their mothers.

### CONCLUSIONS

A theoretical analysis, backed by observations of free-swimming dolphin schools, indicates that hydrodynamic interactions with mothers play an important role in enabling dolphin calves to keep up with rapidly moving adult school members.

## ***Out of Tanganyika: Genesis, explosive speciation, key-innovations and phylogeography of the haplochromine cichlid fishes***

by Walter Salzburger,<sup>#1</sup> Tanja Mack,<sup>#1</sup> Erik Verheyen,<sup>2</sup> and Axel Meyer<sup>✉1</sup>

<sup>1</sup>Lehrstuhl für Zoologie und Evolutionsbiologie, Department of Biology, University of Konstanz, 78467 Konstanz, Germany

<sup>2</sup>Vertebrate Department, Royal Belgian Institute of Natural Sciences, 1000 Brussels, Belgium

✉Corresponding author: Axel Meyer <sup>#</sup>Contributed equally.

Walter Salzburger: [walter.salzburger@uni-konstanz.de](mailto:walter.salzburger@uni-konstanz.de); Tanja Mack:

[tmack@ukaachen.de](mailto:tmack@ukaachen.de); Erik Verheyen: [erik.verheyen@naturalsciences.be](mailto:erik.verheyen@naturalsciences.be); Axel Meyer:

[axel.meyer@uni-konstanz.de](mailto:axel.meyer@uni-konstanz.de)

This is an Open Access article distributed under the terms of the Creative Commons Attribution License (<http://creativecommons.org/licenses/by/2.0>), which permits unrestricted use, distribution, and reproduction in any medium,

## ***Membership News –***

### **New/Returning Members**

The following people joined COAST recently - Welcome and Thanks!

Ron Estrada, Dana Point

Tim Adams, Laguna Hills

Fernando Rodarte, Hacienda Hts

### **Renewals Received**

The following people have renewed their memberships—Thank You!

Mike Khalid

Harold Lieberman

Steve Ehrlich

Steve Dickens (2 yrs)

Charles Pratt (2 yrs total)

Russ Madsen

Larry Gentry

### **Member Renewals Due This Month**

Please remember to renew your membership this month.

Joe and Esther Candelaria

Paul Loiselle

Chuck Rambo

Barbara and Kirk Bean

Kent and Eva Hengstebeck

### **Member Renewals Due in Sept.**

Wanda Jacobson

Art North

Barbara Healy-Sprague

Rahul Kumar

John Skocilic

A. J. Sprague

Showfish is not sent to people whose memberships have been expired more than one month.

### **Member Renewals Past Due**

- ▶ Chuck Mateo
- ▶ Barbara & Kirk Bean
- ▶ Ken & Eva Hengstebeck
- ▶ Frank and Ilan Chang
- ▶ William Moreno
- ▶ Sal Arias
- ▶ David Ogershok

▶ This symbol means this is your last Showfish until you renew.

Renewing members, please fill in a fresh membership application and  
(Continued on Sheet 4)

**Board of Directors**

**President:**

Art North 714-898-2412  
enorth1234@socal.rr.com

**Vice President**

Brian Downing 858-759-4841  
brianjdowning@msn.com

**Treasurer**

Jim Herman 626-335-8327  
jhfinwing@msn.com  
(Pauline Jackson will substitute when Jim is out field collecting or whatever)

**Recording Secretary**

Ron Nash

**Directors**

Ron Jackson 714-638-8445  
katfishron@aol.com  
Ken Hengstebeck 714-538-8393  
kenfish@sbcglobal.net  
John Skocilic  
Skoc@yahoo.com

**Membership Chair, Editor, Web Site Administration**

Charlotte Marelus 818-360-7102  
rcmarelius@earthlink.net

**Auctioneer**

Duncan Mahoney 310-391-3704  
dmahoney@usc.edu

**Printing and Distribution**

Mike McCabe 562-888-1992  
mccabeprint@yahoo.com

**Positions Needing Warm Bodies**

Corresponding Secretary,  
Refreshment Chair, Program Chair;  
Auction Clerk

**COAST fish club meets the first Sunday of every month, in Costa Mesa from 1:00 p.m. to 5:00 p.m.**

Costa Mesa Neighborhood Community Center, Victoria Room  
1845 Park Avenue,  
Costa Mesa, CA 92627

For map, see Orange County Thomas Bros Guide pg 888 Zone J3. Maps are also shown on our website:  
http://www.fishclub.freesevers.com and Internet map sites.

**COAST MEETING DATES:**

August 8, September 4 (tentative), October 2, November 6, December 4

provided the original work is properly cited. BMC Evol Biol. 2005; 5: 17. Published online 2005 February 21. doi: 10.1186/1471-2148-5-17. Copyright © 2005 Salzburger et al; licensee BioMed Central Ltd.

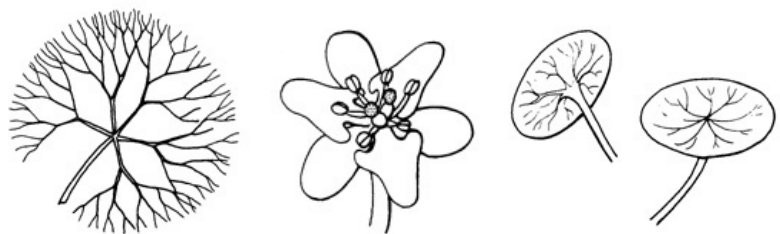
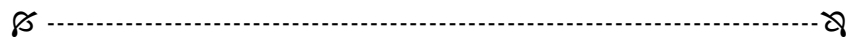
The adaptive radiations of cichlid fishes in East Africa are well known for their spectacular diversity and their astonishingly fast rates of speciation. About 80% of all 2,500 cichlid species in East Africa, and virtually all cichlid species from Lakes Victoria (~500 species) and Malawi (~1,000 species) are haplochromines. Here, we present the most extensive phylogenetic and phylogeographic analysis so far that includes about 100 species and is based on about 2,000 bp of the mitochondrial DNA.

**RESULTS**

Our analyses revealed that all haplochromine lineages are ultimately derived from Lake Tanganyika endemics. We find that the three most ancestral lineages of the haplochromines sensu lato are relatively species poor, albeit widely distributed in Africa, whereas a fourth newly defined lineage - the 'modern haplochromines' - contains an unparalleled diversity that makes up more than 7% of the worlds' ~25,000 teleost species. The modern haplochromines' ancestor, most likely a riverine generalist, repeatedly gave rise to similar ecomorphs now found in several of the species flocks. Also, the Tanganyikan Tropheini are derived from that riverine ancestor suggesting that they successfully re-colonized Lake Tanganyika and speciated in parallel to an already established cichlid adaptive radiation. In contrast to most other known examples of adaptive radiations, these generalist ancestors were derived from highly diverse and specialized endemics from Lake Tanganyika. A reconstruction of life-history traits revealed that in an ancestral lineage leading to the modern haplochromines the characteristic egg-spots on anal fins of male individuals evolved.

**CONCLUSION**

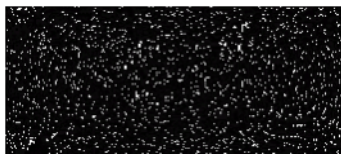
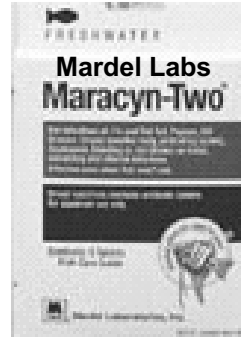
We conclude that Lake Tanganyika is the geographic and genetic cradle of all haplochromine lineages. In the ancestors of the replicate adaptive radiations of the 'modern haplochromines', behavioral (maternal mouthbrooding), morphological (egg-spots) and sexually selected (color polymorphism) key-innovations arose. These might be - together with the ecological opportunity that the habitat diversity of the large lakes provides - responsible for their evolutionary success and their propensity for explosive speciation.



*Cabomba caroliniana* (Fanwort): submersed leaf, flower, emerged leaf. Courtesy of IFAS Center for Aquatic Plants, Univ Florida Gainesville, 1990, Artist Laura Line. Used with permission.

**OUR SPONSORS – Manufacturers Who Support Our Club**

When making buying decisions, please assess these companies' products and remember the investment they make in the tropical fish hobby. I'm sorry I've missed some sponsors, I did not see the raffle table this month.



mail it to Pauline Jackson. Application and Pauline's address are on the last sheet of the newsletter. Membership due date is on the Showfish address label.

**WHAT DOES THE CLUB DO WITH YOUR MEMBERSHIP DATA?**

1. We notify you of upcoming meetings via email. Sporadically we email Showfish and info on events and membership status.
2. Data is listed in the membership roster in accordance with permission given on the member application and renewal form. The club does not make the roster available to anyone but members. We have no control over what members do with it.
3. Sponsors occasionally require member data before they will contribute to the club. We periodically give them a list with members' names and zip code. No other information is given.
4. Contact info of board members sometimes shows on public documents or our club website.

**Food Gratitude Payments –**

Wanda Jacobson and John Skocilic brought in hot dogs and pizza in June and July for members to chow down on (members obliged—in some things, we are world-class troopers).

July's meeting saw many homemade cookies show up as well, from various people, and a potato salad came from a guest. Any one can bring homemade or purchased food for the buffet.

People who bring food can eat from the buffet without charge; we request others put in a fair amount for the food they consume, with the minimum change being \$1.00 for food. Sodas are always 50¢ each, whether you bring food or not.

If you wish to bring a main course, please make arrangements with Art North, Brian Downing, or Pauline Jackson so the club can reimburse part or all of your expense.

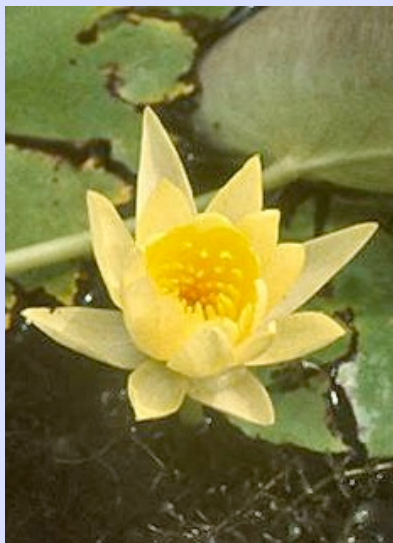


**Plant Bit – *Nymphaea mexicana***



*Nymphaea mexicana* plant pollen waterlily fresh water SEM , 365X magnification by Dennis Kunkel, used with permission <http://www.denniskunkel.com>

Among the yellow hardy lilies, this perennial herb is traditionally regarded as the brightest yellow. *Nymphaea mexicana* is a dwarf lily, which produces runners, allowing it to form large colonies. It's best if the rhizome is planted in a tray, where it will have room to grow. Leaves are medium green and are lightly variegated with maroon blotches. It will tolerate sun or shade.



<http://www.aquaticplantsofflorida.com>

These Rio Grande Valley native pond lilies are to be found in drainage ditches and canals. Although the blooms are small, they are quite ornamental, and the plants are well adapted for use in small pools.

**Science Trivia – Sex Ratio of Spawn**

A recently conducted study on the effects of the chemical that makes fabric inflammable, found that it alters the ratio of males to females in ornamental tropical fish (or at least the ones they used in the test) just like PCB does. The abstract did not emphasize whether or not the chemical always shifted the ratio to more males or more females and did not make clear whether the ratio was greater when the pollutants were greater. Pollution is just one more thing to keep in mind when observing skewed gender ratios in your brood.

**Events elsewhere in the hobby –**

**DESERT FISH CLUB**, a brand new club in Palm Desert, meets the third Sunday of the month in a local aquarium store. For more information, call Wanda Jacobson at 760-328-8842.

**SAN DIEGO FISH CLUB** meets the second Sunday of the month. For more information talk to Barbara or Kirk Bean or Brian Downing at one of our meetings or visit their website, <http://www.sandiegotropicalfish.com>. The Beans have also been contributing to the growth of an IFGA-recognized **guppy club** in the area between Riverside and San Diego; IFGA judge and award-winning breeder, Luke Roebuck, has been participating in this effort as well.

**COAST DISCUSSION GROUP** (COAST members only) is growing on <http://groups.yahoo.com/group/coastfishclub>. Please note that the Yahoo discussion group "COASTfish" is not affiliated with COAST. Only the "COASTfishclub" group is a club-sanctioned discussion group.

**FINDIG** Oct 28-30, convention of the Sacramento Aq. Soc. <http://www.sacramentoaquariumsociety.org/events/> FINDIG is the annual aquarist convention planned and coordinated by the Sacramento Aquarium Society - a three day event featuring world renowned guest speakers, aquarium displays, vendor booths, and general camaraderie. Occurs October 28, 29, and 30 at the Marriott Hotel in Rancho Cordova.

**THE 2005 AGA INTERNATIONAL AQUASCAPING CONTEST IS IN MID-SWING.** You have till September 15th to enter [photos of] your planted tank. All you need to for a complete entry is

- 2-5 photographs of your aquarium (show different views)
- a simple entry form (which you can submit [online](#) or [by mail](#))
- [Signed Photo Release](#) (this year, we are accepting photo releases by FAX or scan)
- a fee of only \$5 per entry (easy payment through PayPal if you enter online)

See <http://showcase.aquatic-gardeners.org/2005.cgi> for more info and past examples.

Summer Project – for that all-tooled-up obsessive hobbyist with time on their hands

Here’s a stained glass window project that can take up all your time, use many of your tools, and most of your money - a stained glass window of two bright orange koi circling in blue water amidst pink lotus blossoms and green lotus leaves. Who knows, this may be the only way to bring your spouse into a state of tolerance for your hobby. This window, an original work of art, is 36” X 24’; the artist was not credited.

WORD PUZZLE: There’s the first and last names of 54 of our members hidden in the puzzle below, all straight across. Can you find them? Do you know them?

T C I K M E O J U T K H D A V I D O G E R S H O K S J A S O N K U C E R A F T
L Y P K F Z W R K E V I N B R U N E R H F D J G L H Q J N R O N H A R L A N B
M M J B G L D B K L S W V Z H B V Q M C A O M U X Y L A E P G K W G L Q Z P L
U K M I K E M C C A B E Y J A N I C E H A Z E L T I N E Y Z W V U G H G Q Q L
T K U T Z S I G M J W B T P G Y K B T A U K U A P V Y K D H W F I J W O J B M
A N G G U A T J O E C A N D E L A R I A E G K M R X A J O H N F U Q U A Y P L
U X Y W H J A J V U V Z E O L I V E R D E I G H T O N M T Q G D I J Q B U Q B B
A J T B A R B A R A S E M A N S K I Q L R H Y I B R I C H A R D W O O N H S V
K D U B M R J E N N I F E R K U C E R A K V L G E Z Y H X P Z P Y D Q F T W I
S O O E D S E M A N S K I B J M M H R T Q N H D A V B W Q T L P D M X P F F X
I C S C O T T D A E S C H N E R M A C H I E L V A N D A M U X F Z R T Q I Y C
F W V M I Z F E K A T H Y V A N D A M W R Q S E G J P A U L L O I S E L L E F
O P A M H S A R R I S S X N K A J A K A S B E G R P T E C X B Q V G O I T R X
Z R P H Y M S B O J E R E S T H E R I A C R A I A C R A I G F R I E S B A
Z D D T H W Z E G J V Z A U K E N A A N T A B I K H Q Q F D Z O L K K T D G Q
A N O N J O S E P H S H U R Y A N H E O C H U C K M A T E O W K K D R V D G N
Z B U I I U N K L R L L L K B D Q G O V I H M K A A A R V G T O B A F B E C Y
B C H R I S T I N A M A R V E L V M V M K G N Z N N H I Y Z X Q U I C J Y F X
X N C O A J S P R A G U E F Z V K V B C F Y J G R B X L E N W X W L B N W E Y
S T L Q L K F M P P Y Q B G D M H C F V S Y S L U B R X N R R O N N A S H
J I C S E F M N C O L D F X T N M A P J Z A L A N B L U M S J X B Q M B Z S U
W W Q T A N P J W Z W I L L I A M M O R E N O H B N B B O N N I E L E W I S H
W F A J V Z X K W O P L N K Q V J H W S I V O D O N F O L T Z A I H X F M W H
T A C K M Y H D L Q R A Y U I T T S U Z P S K N A T O M I O M B V Q W F K V N
V I B A Y E L A I N E M C C A B E K E V I N J O S E P H E E D M C F B Y J V C
M E B L K Q F O O A C J E F K Y D Q O K B D P C A H F M A M I E H A L L Z I Z
O C R Z Q T I F J L X W U I Y X O W F V O M A R T I N G E E P Z V Y N M Y F F
V M W T F Z X H X C X L G Y E P D M F O G M B A R B A R A B E A N L J J J D Q
A L A N R O S E N A O O R D Y P H G R G T V H S T U S P L U K E R O E B U C K
X K B W A N D A J A C O B S O N B R I A N D O W N I N G G H A R T N O R T H I
D P N Y S B T V R A H U L K U M A R Q J I M T E L L O R A V I R B Y Q C A R M V
T T R T N A M O P S A N D Y B I N D E R J I R H M V G Y R D B U Z C Y T C A H K
V V E T X Q A P H T Y D E B V I R G I N I A E N G E N T O M V A R I N L N L B
B B V C V L K I R K B E A N W S E F N H Z L X K A R E N P E Y S E R Y X B B S
A T S A L A R I A S J X L S W R T H Y A Y C L X I B R Y A N L A M P L F S P C
S C H Q J R E Q V D H U U D F S L A W R E N C E L E S H I N S K I J O L T F J
M Q D M B A R B A R A H E A L Y S P R A G U E V S P B A R R Y H E L L E R Z N
C H R Q O Q O B H X C B Q O E A L C H U C K R A M B O M J E E R Y T C F S C T E D
D B I U A C P Y V Z B L V S A K M J M V I N N Y K U T T Y A B Q R O M O Z W D